



INDUSTRIES INC.

Home of Mr. Pickup® Truck and SUV Accessories

2007-08 TUNDRA Installation sheet TUN602W-07

Parts List:

- 1 - Grille Assembly; 2 - Top Brackets; 2 - Bottom Brackets
- 2 - Stiffener Bolt Plates
- 4 - Zinc ½"x1 ¾" bolts,
- 16 - Zinc ½" flat washers, 12 - ½" lock washers; 8 - ½" hex nuts
- 4 - 12mmx50mm bolts

Installation Procedure:

1. Temporarily remove the Tow Hooks. With the Tow Hooks removed, install the Top Brackets. Note the angle of the top bracket as it is being installed in Fig 3. Also note in Fig 5, the Top Bracket comes through the first cut out in the bumper, (arrow is pointing to cut out)
2. Once the Top Brackets are in place, install the bottom brackets and the Tow Hook using the 12mmx50mm bolt, flat washer and lock washer as shown in fig 4. Leave the hardware loose at this time to allow for adjustments. Fig 5 shows the "front" view of the Driver's side top & bottom installed.
3. With Top & Bottom brackets installed, install the Stiffener Bolt Plates as shown in Fig 6 & 7. The Stiffener Bolt Plate clamps the Top Bracket to the frame to make a solid mount for the grille guard. Fig 8 shows the Top Bracket and the Stiffener Bolt Plate, as they clamp around the frame horn. Use the ½" nuts, flat and lock washers to secure the Bolt Plate to the Top Bracket. Leave the hardware loose at this time to allow for adjustments to the grille guard.
4. Install the Grille Guard assembly to the brackets. NOTE: The brackets mount on the inside of the Grille Guard Assembly. The Top Brackets should be secured first using the ½"x1 ¾" bolt, flat washers, lock washer and ½" hex nut, as shown in fig 9. Leave the hardware loose at the time to allow for adjustments to the grille guard.
5. Secure the Bottom brackets to the Grille Guard using the ½"x1 ¾" bolt, flat washers, lock washer and ½" hex nut, as shown in fig 9. Leave the hardware loose at this time to allow for adjustments to the grille guard.
6. With the Grille Guard mounted to the brackets, tighten the Top brackets to the frame. See fig 4.
7. Adjust the alignment of the Grille Guard then tighten the Top & Bottom Brackets to the Grille Guard. Make sure you can open the hood.....
8. Tighten the Stiffener Bolt Plates to the Top Brackets to ensure the mount is solid, see fig. 7. Make sure ALL hardware is tight before driving the vehicle.

Fig 1. Brackets – Arrow points to Passenger Top Bracket



Fig 2. Driver's side Top Bracket



Fig 3. Driver's side Top Bracket being installed



Fig 4. Driver's side Top & bottom brackets being installed w/Tow Hook

2007-08 TUNDRA Installation continued.....



Fig 5, Driver's side brackets installed



Fig 6, Installing the Driver's side stiffener bolt plate

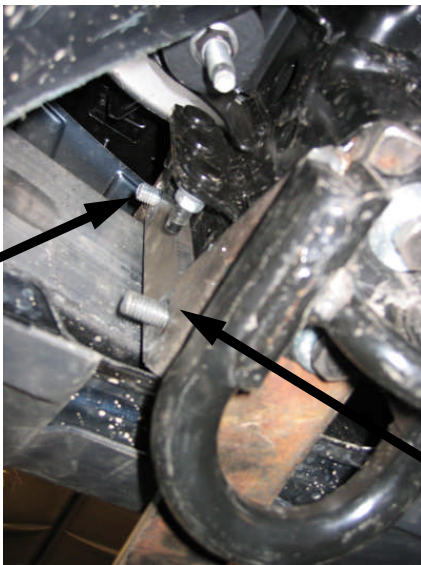


Fig 7 Shows stiffener bolt plate "bolts" protruding through the holes of the Top Bracket, see Fig 8 for details.



Fig 8 Driver's side top bracket and stiffener bolt plate



Fig 9 - Arrows pointing to hardware securing the Grille Guard to the Top & Bottom Brackets

Warranty Statement

All products manufactured by MIH Industries are warranted in the U.S. and Canada for a period of (3) three years (NOTE: Powder Coated products carry a 1 year warranty on the finish) from the date of purchase to the original purchaser. MIH Industries guarantees against manufacturer defects in materials, workmanship, and finish under normal use excluding damage resulting from road hazards, product misuse, improper installation, impairments from collisions, product modifications, product neglect, or vandalism. This three-year warranty applies only to new products and is limited to the repair or replacement of MIH products. Original purchaser must return defective merchandise, along with purchase receipt, to the original place of purchase.

This warranty is not transferable and all liability for incidental or consequential loss or damage or expense, directly or indirectly, arising from labor, freight, inconvenience, removal, installation, or use of the product is excluded unless otherwise prohibited by State or Provincial law(s).